

HD1210 Series



12 Megapixel Microscope Camera with Multiple Outputs

**INNOVATED FOR TOP BRAND
MICROSCOPES**

MULTIPLE OUTPUTS, MORE APPLICATIONS

The camera HD1210-W provides four output methods: USB, WiFi, HDMI and WAN, and can stream live image simultaneously with multiple interfaces.



USB mode: Unique algorithm guarantees high-speed transmission (30fps at 12 megapixel) through H264 stream protocol. No need to install driver.



5G WiFi mode: Using dedicated APP 'KoPa WiFi Lab' to view realtime images through mobiles, tablets and laptops simultaneously, up to 10 devices.



HDMI mode: Real-time stream images to monitor, TV, projector etc. through HDMI cable. Support 4K resolution (3840x2160 pixels) .



Ethernet mode: Connects to the router, allowing different computers in the same LAN to obtain real-time images simultaneously.

Synchronous Output Mode:

⊙ USB + HDMI

⊙ WiFi + HDMI

⊙ WAN + HDMI

⊙ WiFi + WAN + HDMI

i The camera can be directly connected to the monitor through HDMI without computer. In this mode, the USB cable is used with the power adapter only for power supply.

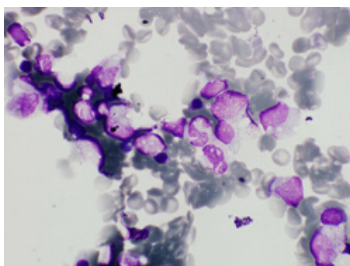
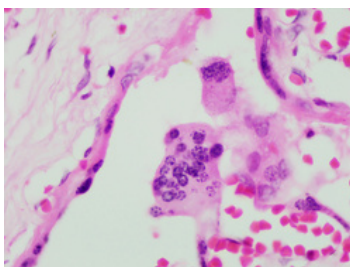
MORE PIXELS, MORE DETAILS

HD1210-W employs the latest back-illuminated and stacked CMOS image sensor with diagonal 7.857 mm (Type 1/2.3"). Max. recordable pixels are up to 4000x3000 (12 megapixel), supporting 4K output through HDMI.

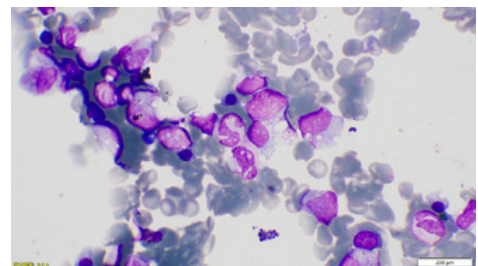
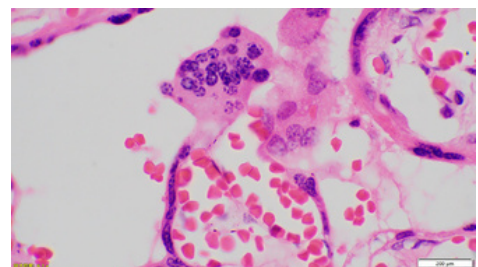
Stunning in bright filed

In bright field imaging, thanks to the optimized algorithm of automatic exposure and automatic white balance, it doesn't require many adjustments to get the desired image.

HD1210-W



Top brand



Histological H&E | Bright filed, 100X objective

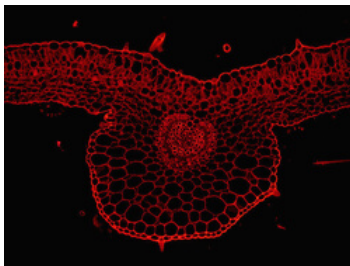
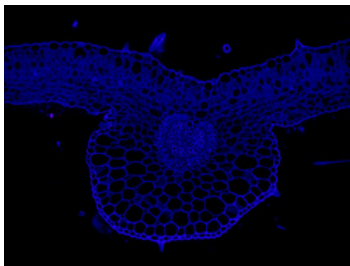
EXCELLENT IMAGE RETENTION

HD1210-W camera has been color-calibrated according to the optical system of top brand microscopes to obtain perfect color balance. Biological mode and industrial mode can be selected for different application types.

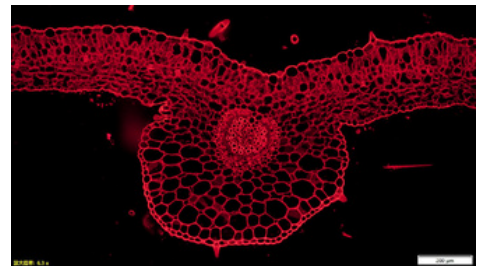
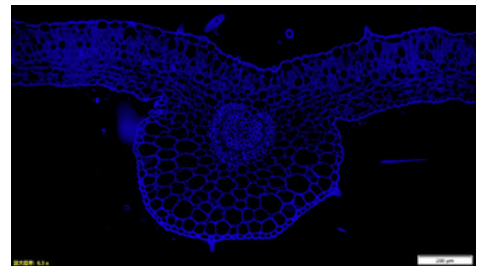
Exceptional in low light

Thanks to the dedicated color balance algorithm, the camera can not only obtain perfect "true color" images in bright field, but also perform well in dark field and fluorescence.

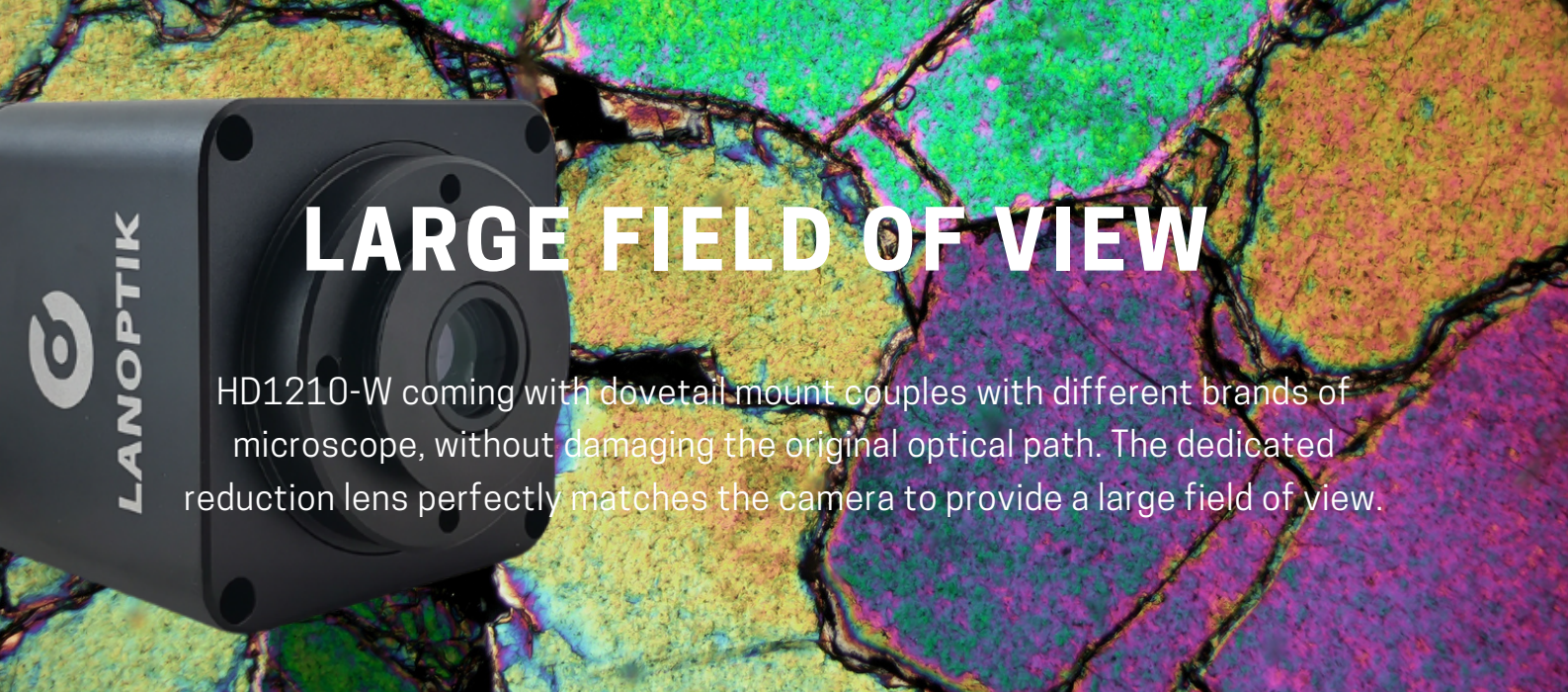
HD1210-W



Top brand camera



Pelargonium Leaf | Dark filed, 10X objective



LARGE FIELD OF VIEW

HD1210-W coming with dovetail mount couples with different brands of microscope, without damaging the original optical path. The dedicated reduction lens perfectly matches the camera to provide a large field of view.

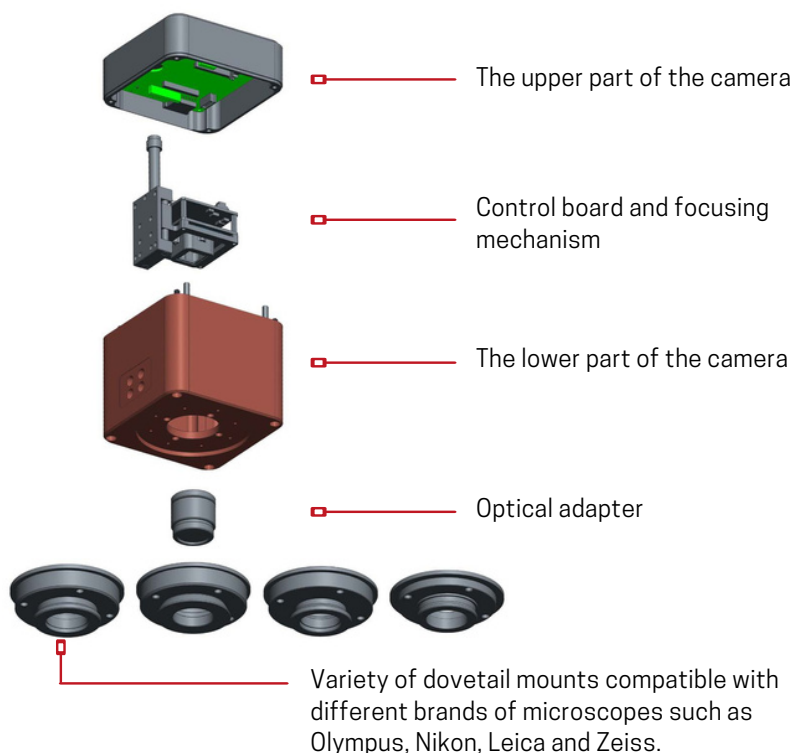
No worries about the sensor size

*Although the sensor used in HD1210 series cameras is not the largest, the built-in 0.43X reduction lens perfectly matches its format and guarantees a large field of view, without field curvature and distortion. Save your money on the C mount adapter.



Ultra-precision focusing mechanism

The unique focusing mechanism easily ensures that the digital images from camera and the image from eyepiece are completely parfocal.



HD1210 Series

Specifications

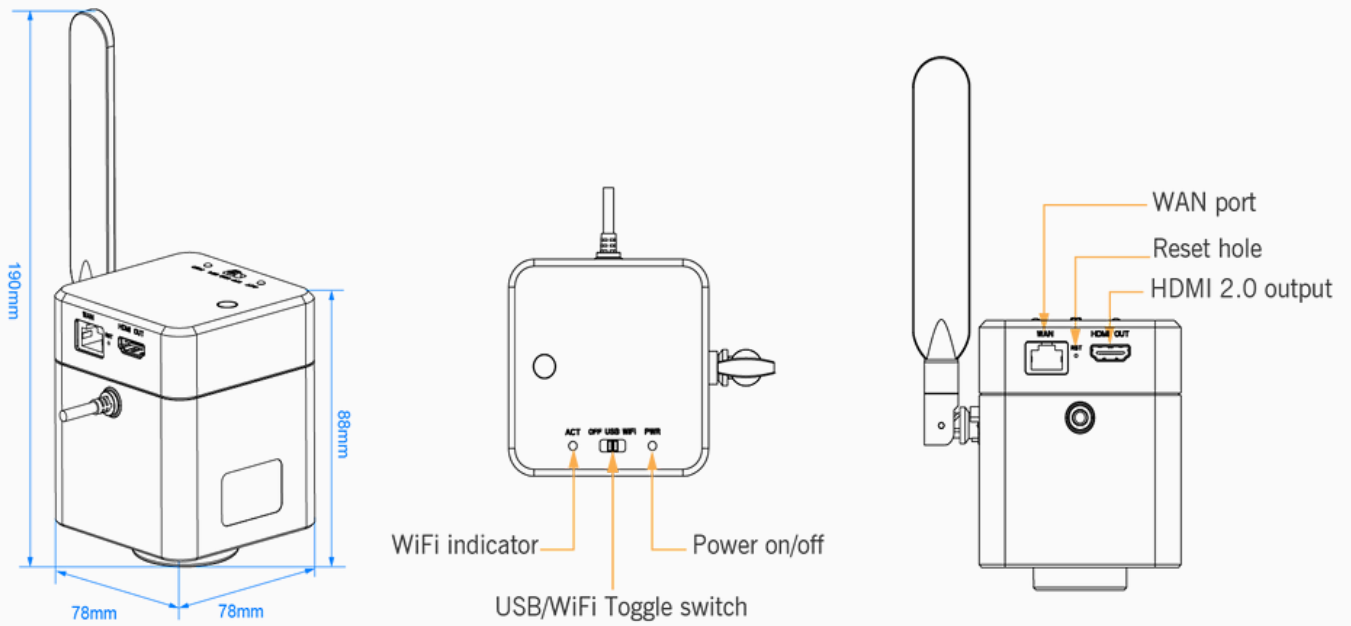
Resolution	12 MP (4000x3000 pixels)
Sensor Type	1/2.3" Sony CMOS
Pixel Size	1.55 μ m
Frame Rate	30 fps (60 fps on HDMI)
Shutter	Electronic rolling
Spectral Response	308 ~ 650 nm
Exposure	Realtime automatic, Manual
White Balance	Realtime automatic, Manual
Data Interface	USB, HDMI, WiFi, WAN
Optical Interface	C mount (no lens) or Dovetail mount (0.43x lens)
HDMI Output	Auto-adaptive display, up to 3840x2160
WiFi Protocol	5G WiFi, IEEE 802.11ac
WiFi Frequency	5.180 ~ 5.825 GHz
Image Format	Snapshot: JPG, BMP, PNG, TIFF Record: MP4 file
Power Input	DC 5.0V, 2A
PC Software	Pixit Pro_64bit

Types & Models

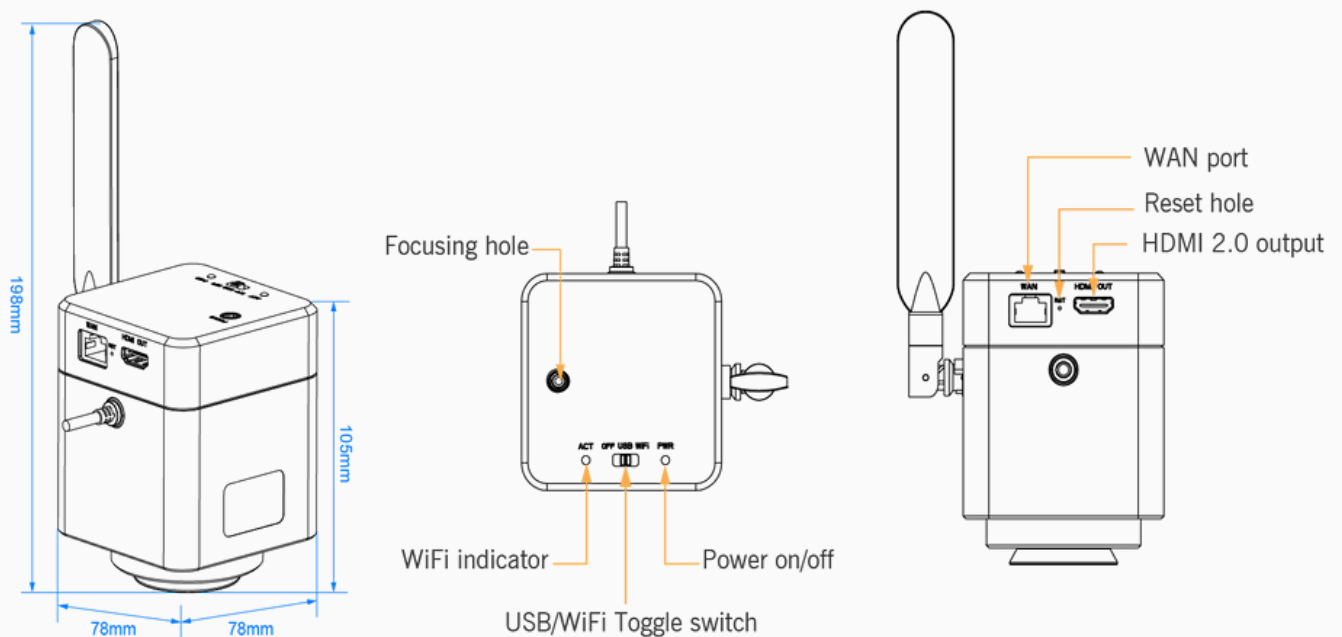
Applicable Microscope	Model	Type
Standard C-Mount	HD1210	Type A (no lens)
Olympus	HD1210-WO	Type B (0.43X lens)
Nikon	HD1210-WN	
Leica	HD1210-WL	
Zeiss	HD1210-WZ	

Dimensions

Type A: C Mount (without lens)



Type B: Dovetail Mount (built-in 0.43X lens)



Specifications are subject to change without any obligation on the part of the manufacturer.



LANOPTIK TECHNOLOGIES LTD

No. 72 Hongjing Street, Lejia Road, Baiyun District, Guangzhou, China. 510400

Phone: +86 20 3898 6017 | Fax: +86 20 3847 6076

Website: <http://www.lanoptik.com> | Email: info@lanoptik.com